

vtech[®]

User's Manual

Go! Go! Smart Animals[®]
Playtime goes wild with learning![™]

Grow & Learn Farm[™]



© 2015 VTech
Printed in China
91-003061-000[©]

Dear Parent,

Welcome to the world of **Go! Go! Smart Animals**®! We're excited you've decided to go on an adventure with us and explore all that **Go! Go! Smart Animals**® has to offer. These toys have been designed to give your child a thrilling learning experience with hours of fun.

Go! Go! Smart Animals® features a collection of animals that interact with your child by lighting up and playing music and sounds while teaching your child letters and animal names*. But that's only the beginning of the learning excitement! When your child interacts with our innovative **SmartPoint**® technology, they will love hearing the animals respond to each **SmartPoint**® location on **Go! Go! Smart Animals**® and **Go! Go! Smart Wheels**® playsets* with different phrases, cheerful melodies, sing-along songs or sound effects.

Additionally, our **Go! Go! Smart Animals**® playsets include tracks that can be arranged in endless ways and can be connected to other playsets including **Go! Go! Smart Wheels**® to stimulate your child's creativity. The playsets also feature buttons, gears and other manipulative elements to encourage the development of your child's fine motor skills.

With **Go! Go! Smart Animals**®, playtime goes wild with learning!

Sincerely,

Your friends at **VTech**®

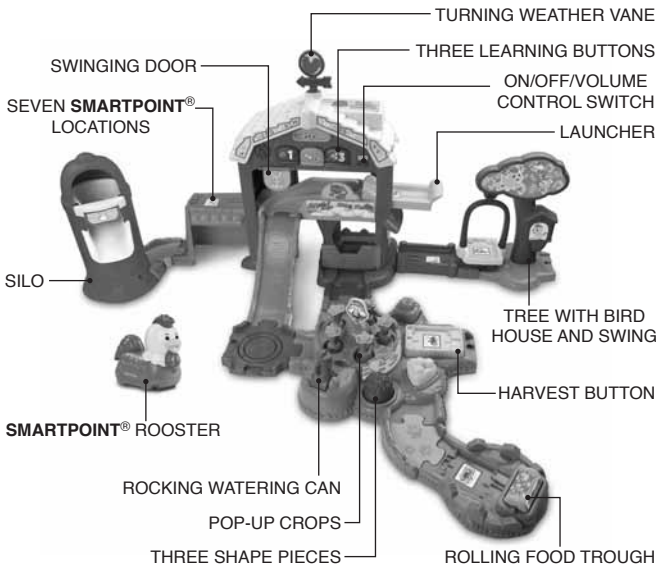
To learn more about **VTech**® toys, visit www.vtechkids.com

*Each sold separately.

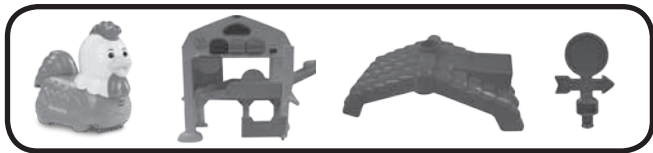
INTRODUCTION

Thank you for purchasing the **VTech® Go! Go! Smart Animals® Grow & Learn Farm™**!

Get growing at the **Go! Go! Smart Animals® Grown & Learn Farm™** by **VTech®**. This colorful farm has an electronic barn that introduces colors, numbers, and vegetables. Roll Reggie the **SmartPoint®** rooster over the seven **SmartPoint®** locations to hear different phrases, music or fun sound effects. Then rock the watering can to watch the garden “grow.” You can also connect the tracks to other **Go! Go! Smart Animals®** and **Go! Go! Smart Wheels®** playsets (each sold separately)!



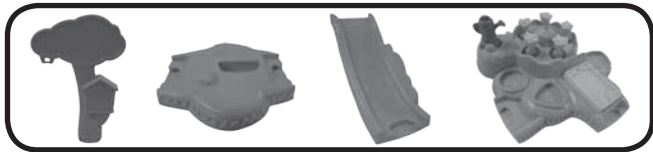
INCLUDED IN THIS PACKAGE



- One **VTech® Go! Go! Smart Animals®** rooster
- One electronic barn
- One barn roof
- One weather vane



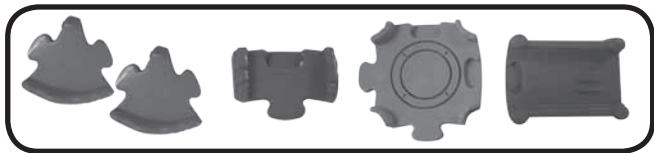
- One **SmartPoint®** barn base
- One barn support
- One small **SmartPoint®** building
- One swing bracket
- One **SmartPoint®** swing



- One tree
- One grass base
- One slide
- One **SmartPoint®** pop-up garden



- One scarecrow
- One **SmartPoint**[®] food trough
- Three shape pieces
- Two male connector tracks



- Two 60-degree male connector tracks
- One male/female connector track
- One cross track
- One **SmartPoint**[®] straight track



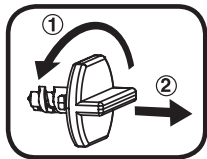
- One silo
- One curved silo base
- One small swinging door
- One label sheet
- One user's manual

WARNING: All packing materials, such as tape, plastic sheets, packaging locks and tags are not part of this toy, and should be discarded for your child's safety.

ATTENTION : Pour la sécurité de votre enfant, débarrassez-vous de tous les produits d'emballage tels que rubans adhésifs, feuilles de plastique, attaches et étiquettes. Ils ne font pas partie du jouet.

NOTE: Please keep user's manual as it contains important information.

Unlock the packaging locks:

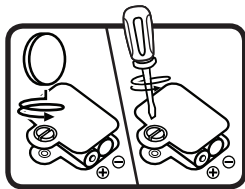


- ① Turn the packaging lock counter-clockwise several times.
- ② Pull out and discard the packaging lock.

GETTING STARTED

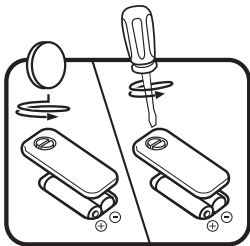
BATTERY INSTALLATION – ROOSTER

1. Make sure the unit is turned **OFF**.
2. Locate the battery cover on the bottom of the rooster. Use a coin or a screwdriver to loosen the screw.
3. Install 2 new “AAA” (AM-4/LR03) batteries following the diagram inside the battery box. (The use of new alkaline batteries is recommended for maximum performance.)
4. Replace the battery cover and tighten the screw to secure the battery cover.



BATTERY INSTALLATION – FARM PLAYSET

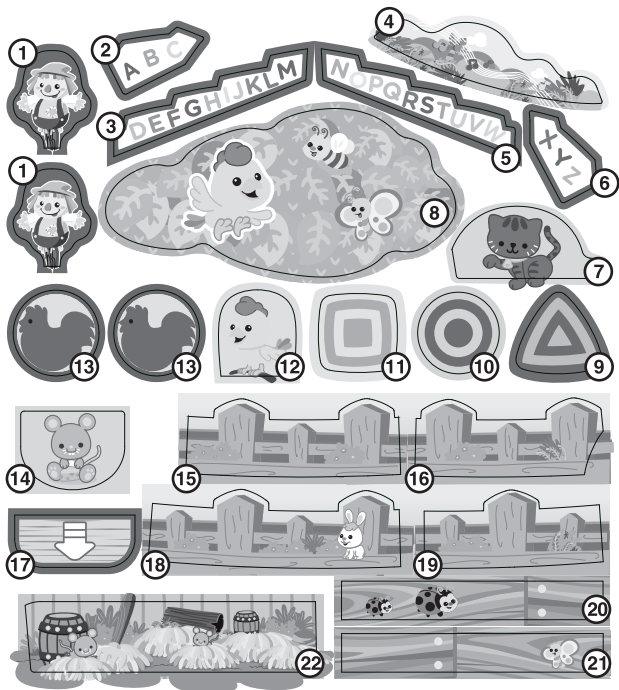
1. Make sure the unit is turned **OFF**.
2. Locate the battery cover on the back of the electronic barn. Use a coin or a screwdriver to loosen the screw.
3. Install 2 new “AA” (AM-3/LR6) batteries following the diagram inside the battery box. (The use of new alkaline batteries is recommended for maximum performance.)
4. Replace the battery cover and tighten the screw to secure the battery cover.

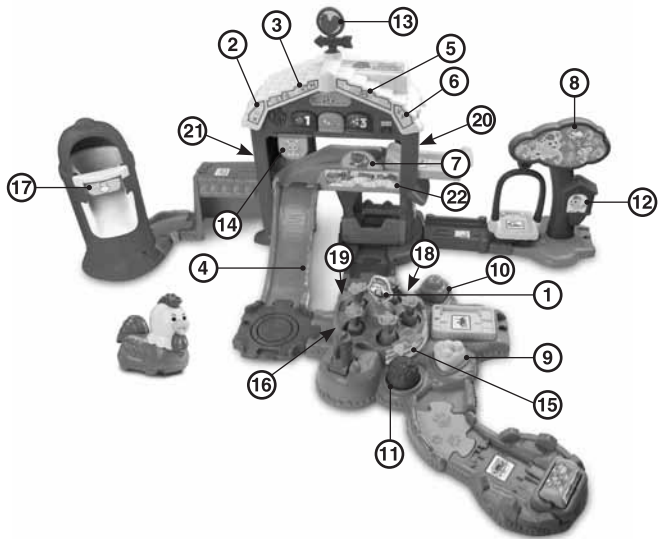


BATTERY NOTICE

- Use new alkaline batteries for maximum performance.
- Use only batteries of the same or equivalent type as recommended.
- Do not mix different types of batteries: alkaline, standard (carbon-zinc) or rechargeable (Ni-Cd, Ni-MH), or new and used batteries.
- Do not use damaged batteries.
- Insert batteries with the correct polarity.
- Do not short-circuit the battery terminals.
- Remove exhausted batteries from the toy.
- Remove batteries during long periods of non-use.
- Do not dispose of batteries in fire.
- Do not charge non-rechargeable batteries.
- Remove rechargeable batteries from the toy before charging (if removable).
- Rechargeable batteries are only to be charged under adult supervision.

Please adhere the labels to the playset securely as indicated below:

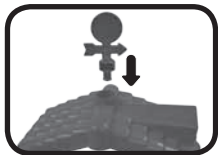




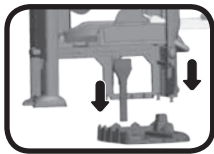
ASSEMBLY INSTRUCTIONS

With the VTech® Go! Go! Smart Animals® Grown & Learn Farm™, safety comes first. To ensure your child's safety, adult assembly is required.

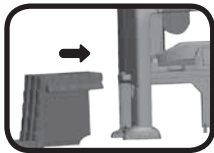
1. Insert the weather vane into the barn roof. Then attach the roof to the electronic barn as shown.



2. Insert the electronic barn into the **SmartPoint**® barn base as shown. Then insert the barn support to connect between the barn and the base.



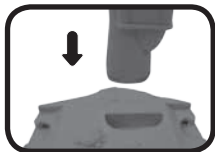
3. Attach the small **SmartPoint**® building to the barn as shown.



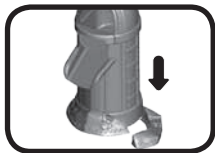
4. Attach the swing bracket to the **SmartPoint**® swing. You will hear a "click" sound to indicate the pieces are secure. Once the swing bracket is connected to the swing, it cannot be detached.



5. Connect the assembled swing to the tree. You will hear a “click” sound to indicate the pieces are secure. Then insert the tree into the grass base as shown.



6. Insert the small swinging door into the silo as shown. Then attach the silo base as shown.



7. Inset the scarecrow into the **SmartPoint**[®] pop-up garden as shown.



Once you've completed the above steps, you are ready to play! Refer to the product image on the cover page of the manual for one way to set up the **Grow & Learn Farm**[™]. You can connect these pieces to the other included track pieces or you can connect this playset to other **Go! Go! Smart Animals**[®] and **Go! Go! Smart Wheels**[®] playsets (each sold separately).

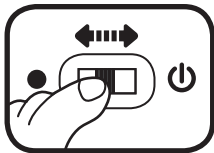
EXPAND & EXPLORE

Connect to the **Go! Go! Smart Animals® Deluxe Track Set** or other **Go! Go! Smart Wheels®** and **Go! Go! Smart Animals®** playsets (each sold separately) to expand the **Grow & Learn Farm™** and inspire creativity.

PRODUCT FEATURES – ROOSTER

1. ON/OFF SWITCH

To turn the unit **ON**, slide the **ON/OFF SWITCH** to the **ON** (⏻) position. To turn the unit **OFF**, slide the **ON/OFF SWITCH** to the **OFF** (●) position.



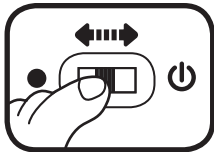
2. AUTOMATIC SHUT-OFF

To preserve battery life, the **VTech® Go! Go! Smart Animals®** rooster will automatically power-down after approximately 65 seconds without input. The unit can be turned on again by pressing the light-up button or pushing the rooster quickly.

Note: This product is in try-me mode in the packaging. After opening the package, turn the rooster off and on again to proceed with normal play.

ACTIVITIES – ROOSTER

1. Slide the **ON/OFF SWITCH** to the **ON** (⏻) position to turn the unit **ON**. You will hear a song, a phrase and sounds. The light will flash with the sounds.



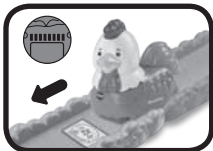
2. Press the **LIGHT-UP BUTTON** to hear fun sounds, sing-along songs and phrases. The light will flash with the sounds.



3. Push the rooster to hear fun sounds and melodies. While a melody is playing, push the rooster again to add in fun sounds on top of the melody. The light will flash with the sounds.






4. For added fun, the rooster interacts with **VTech® Go! Go! Smart Animals®** playsets (each sold separately). Simply roll or put the rooster on one of the playset's **SmartPoint®** locations to hear fun sounds, short tunes and sing-along songs and to see the light flash. You can also play with your animal on **Go! Go! Smart Wheels®** playsets (each sold separately).



PRODUCT FEATURES – FARM PLAYSET

1. ON/OFF/VOLUME CONTROL SWITCH

To turn the unit **ON**, slide the **ON/OFF/VOLUME CONTROL SWITCH** to the **low volume** () or **high volume** () position. To turn the unit **OFF**, slide the **ON/OFF/VOLUME CONTROL SWITCH** to the **OFF** () position.



2. SMARTPOINT® LOCATIONS

The **Grow & Learn Farm™** includes 7 **SmartPoint®** locations that interact with the included **SmartPoint®** rooster or any other **Go! Go! Smart Animals®** animal (each sold separately). Simply roll or place the animal over a **SmartPoint®** location to hear fun sounds, sing-along songs, phrases, short tunes or melodies.

3. AUTOMATIC SHUT-OFF

To preserve battery life, the **VTech® Go! Go! Smart Animals® Grow & Learn Farm™** will automatically power-down after approximately 50 seconds without input. The unit can be turned on again by pressing any learning button or moving the **SWINGING DOOR** on the barn.

ACTIVITIES – FARM PLAYSET

1. Slide the **ON/OFF VOLUME CONTROL SWITCH** to either volume setting to turn the unit on. You will hear a rooster sound, phrase and song. The light will flash with the sounds.



2. Press the **LEARNING BUTTONS** to learn colors, numbers and vegetables, and to hear sing-along songs and playful melodies. While a melody is playing, press the other two **LEARNING BUTTONS** to add in fun sounds on top of the melody. The light will flash with the sounds.



3. Place the rooster on the **LAUNCHER** inside the farm. Lift up the **LAUNCHER** to send the rooster down the slide. The rooster will roll through the **SWINGING DOOR** to trigger fun sounds. The light will flash with the sounds.



4. Place the rooster on the small **SmartPoint®** building to hear sing-along songs and playful melodies.



5. Place the rooster on the **SmartPoint®** swing to trigger a fun response.



6. Place the rooster on the **SmartPoint®** pop-up garden to trigger a fun response. Rock the **WATERING CAN** to make the carrots grow. Carrots will be fully grown after 3 times. Press the big **HARVEST BUTTON** to make the carrots disappear back underground as you pretend to harvest them. Insert the three shape pieces into their holes for shape-sorting fun or drop them down the silo slide for sliding fun.



7. Place the rooster onto the **SmartPoint®** food trough to trigger a fun response. Spin the roller to change the food.



8. Move the rooster to the **SmartPoint®** barn base to trigger a fun response.



9. Move the rooster to the **SmartPoint®** straight track to trigger a fun response.



SUNG SONG LYRICS

SONG 1

The pigs on the farm say, "Oink, oink, oink."

Cows say "Moo."

Sheep say "Baa."

The farmers on the farm say "Grow, crops, grow."

All day long!

SONG 2

One tomato, red and sweet.

It is such a healthy treat!

SONG 3

Two cabbages, green and round.

Eat the leaves, make a crunching sound!

SONG 4

Three beets, growing underground.

They are purple, they are round.

MELODY LIST:

1. Farmer in the Dell
2. Old MacDonald Had a Farm
3. Bingo
4. Home on the Range
5. Three Blind Mice
6. Turkey in the Straw
7. Goosey Goosey Gander
8. Happy Farmer
9. Mary Had a Little Lamb
10. Old Grey Mare
11. This Little Piggy
12. Sing a Song a Sixpence
13. Hey Diddle Diddle
14. Three Little Kittens
15. Chicken Reel

CARE & MAINTENANCE

1. Keep the unit clean by wiping it with a slightly damp cloth.
2. Keep the unit out of direct sunlight and away from any direct heat source.
3. Remove the batteries when the unit will not be in use for an extended period of time.
4. Do not drop the unit on hard surfaces and do not expose the unit to moisture or water.

TROUBLESHOOTING

If for some reason the program/activity stops working, please follow these steps:

1. Please turn the unit **OFF**.
2. Interrupt the power supply by removing the batteries.
3. Let the unit stand for a few minutes, then replace the batteries.
4. Turn the unit **ON**. The unit should now be ready to play again.
5. If the product still does not work, replace with an entire set of new batteries.

If the problem persists, please call our Consumer Services Department at 1-800-521-2010 in the U.S. or 1-877-352-8697 in Canada, and a service representative will be happy to help you.

IMPORTANT NOTE:

Creating and developing **Infant Learning** products is accompanied by a responsibility that we at **VTech**® take very seriously. We make every effort to ensure the accuracy of the information, which forms the value of our products. However, errors sometimes can occur. It is important for you to know that we stand behind our products and encourage you to call our Consumer Services Department on at 1-800-521-2010 in the U.S. or 1-877-352-8697 in Canada, with any problems and/or suggestions that you might have. A service representative will be happy to help you.

Note:

This equipment has been tested and found to comply with the limits for a Class B digital device, pursuant to Part 15 of the FCC Rules. These limits are designed to provide reasonable protection against harmful interference in a residential installation. This equipment generates, uses and can radiate radio frequency energy and, if not installed and used in accordance with the instructions, may cause harmful interference to radio communications. However, there is no guarantee that interference will not occur in a particular installation.

If this equipment does cause harmful interference to radio or television reception, which can be determined by turning the equipment off and on, the user is encouraged to try to correct the interference by one or more of the following measures:

- Reorient or relocate the receiving antenna.
- Increase the separation between the equipment and receiver.
- Connect the equipment into an outlet on a circuit different from that to which the receiver is connected.
- Consult the dealer or an experienced radio/TV technician for help.

Caution: Changes or modifications not expressly approved by the party responsible for compliance could void the user's authority to operate the equipment.

THIS DEVICE COMPLIES WITH PART 15 OF THE FCC RULES. OPERATION IS SUBJECT TO THE FOLLOWING TWO CONDITIONS: (1) THIS DEVICE MAY NOT CAUSE HARMFUL INTERFERENCE, AND (2) THIS DEVICE MUST ACCEPT ANY INTERFERENCE RECEIVED, INCLUDING INTERFERENCE THAT MAY CAUSE UNDESIRE OPERATION.

CAN ICES-3 (B)/NMB-3(B)



PRODUCT WARRANTY

This Warranty is applicable only to the original purchaser, is non-transferable and applies only to "VTech" products or parts. This product is covered by a 3-month Warranty from the original purchase date, under normal use and service, against defective workmanship and materials. This Warranty does not apply to (a) consumable parts, such as batteries; (b) cosmetic damage, including but not limited to scratches and dents; (c) damage caused by use with non-VTech products; (d) damage caused by accident, misuse, unreasonable use, immersion in water, neglect, abuse, battery leakage, or improper installation, improper service, or other external causes; (e) damage caused by operating the product outside the permitted or intended uses described by VTech in the owner's manual; (f) a product or part that has been modified (g) defects caused by normal wear and tear or otherwise due to the normal aging of the product; or (h) if any VTech serial number has been removed or defaced.

Prior to returning a product for any reason, please notify the VTech Consumer Services Department, by sending an email to vtechkids@vtechkids.com or calling 1-800-521-2010. If the service representative is unable to resolve the issue, you will be provided instructions on how to return the product and have it replaced under Warranty. Return of the product under Warranty must adhere to the following rules:

If VTech believes that there may be a defect in the materials or workmanship of the product and can confirm the purchase data and location of the product, we will at our discretion replace the product with a new unit or product of comparable value. A replacement product or parts assumes the remaining Warranty of the original product or 30 days from the date of replacement, whichever provides longer coverage.

THIS WARRANTY AND THE REMEDIES SET FORTH ABOVE ARE EXCLUSIVE AND IN LIEU OF ALL OTHER WARRANTIES, REMEDIES AND CONDITIONS, WHETHER ORAL, WRITTEN, STATUTORY, EXPRESS OR IMPLIED. IF VTECH CANNOT LAWFULLY DISCLAIM STATUTORY OR IMPLIED WARRANTIES THEN TO THE EXTENT PERMITTED BY LAW, ALL SUCH WARRANTIES SHALL BE LIMITED TO THE DURATION OF THE EXPRESS WARRANTY AND TO THE REPLACEMENT SERVICE AS DETERMINED BY VTECH IN ITS SOLE DISCRETION.

To the extent permitted by law, VTech will not be responsible for direct, special, incidental or consequential damages resulting from any breach of Warranty.

This Warranty is not intended to persons or entities outside the United States of America. Any disputes resulting from this Warranty shall be subject to the final and conclusive determination of VTech.